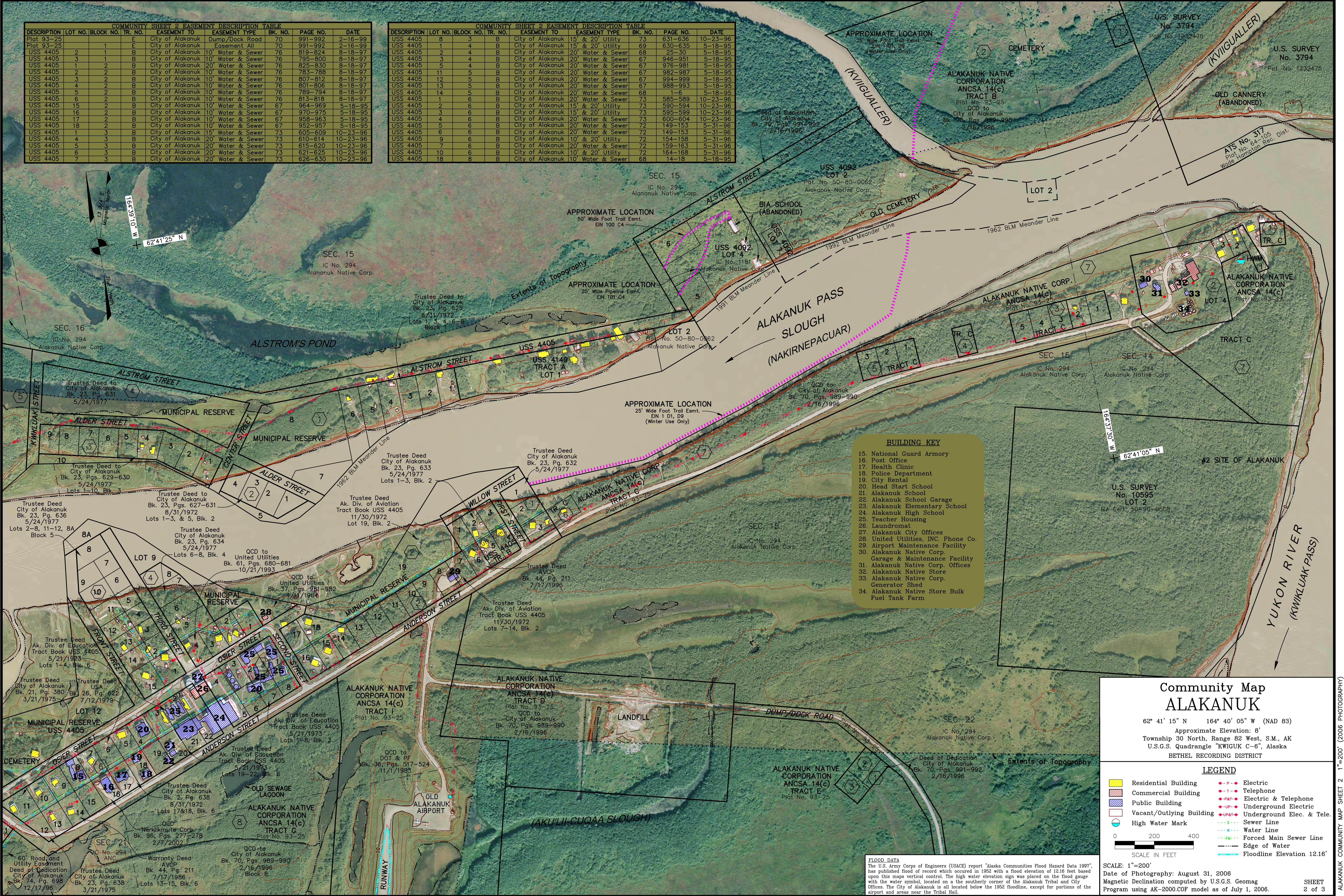


DESCRIPTION	LOT NO.	BLOCK NO.	TR. NO.	EASEMENT TO	EASEMENT TYPE	BK. NO.	PAGE NO.	DATE
Plot 93-25				City of Alakanuk	Dump/Dock Road	70	991-992	2-16-99
Plot 93-25				City of Alakanuk	Easement All	70	991-992	2-16-99
USS 4405	2	1	B	City of Alakanuk	10' Water & Sewer	76	819-824	8-18-97
USS 4405	3	1	B	City of Alakanuk	10' Water & Sewer	76	795-800	8-18-97
USS 4405	1	2	B	City of Alakanuk	20' Water & Sewer	76	825-830	8-18-97
USS 4405	2	2	B	City of Alakanuk	10' Water & Sewer	76	783-788	8-18-97
USS 4405	3	2	B	City of Alakanuk	10' Water & Sewer	76	807-812	8-18-97
USS 4405	4	2	B	City of Alakanuk	10' Water & Sewer	76	801-806	8-18-97
USS 4405	5	2	B	City of Alakanuk	10' Water & Sewer	76	789-794	8-18-97
USS 4405	6	2	B	City of Alakanuk	10' Water & Sewer	76	813-818	8-18-97
USS 4405	15	2	B	City of Alakanuk	10' Water & Sewer	67	964-969	5-18-95
USS 4405	16	2	B	City of Alakanuk	10' Water & Sewer	67	970-975	5-18-95
USS 4405	17	2	B	City of Alakanuk	10' Water & Sewer	67	958-963	5-18-95
USS 4405	18	2	B	City of Alakanuk	10' Water & Sewer	67	952-957	5-18-95
USS 4405	1	3	B	City of Alakanuk	15' Water & Sewer	73	605-609	10-23-96
USS 4405	4	3	B	City of Alakanuk	20' Water & Sewer	73	610-614	10-23-96
USS 4405	5	3	B	City of Alakanuk	20' Water & Sewer	73	615-620	10-23-96
USS 4405	6	3	B	City of Alakanuk	20' Water & Sewer	73	621-625	10-23-96
USS 4405	7	3	B	City of Alakanuk	20' Water & Sewer	73	626-630	10-23-96

DESCRIPTION	LOT NO.	BLOCK NO.	TR. NO.	EASEMENT TO	EASEMENT TYPE	BK. NO.	PAGE NO.	DATE
USS 4405	8	3	B	City of Alakanuk	15' & 20' Utility	73	631-636	10-23-96
USS 4405	1	4	B	City of Alakanuk	15' & 20' Utility	69	630-635	5-18-95
USS 4405	2	4	B	City of Alakanuk	20' Water & Sewer	68	25-30	5-18-95
USS 4405	3	4	B	City of Alakanuk	20' Water & Sewer	67	946-951	5-18-95
USS 4405	5	4	B	City of Alakanuk	20' Water & Sewer	67	976-981	5-18-95
USS 4405	11	5	B	City of Alakanuk	20' Water & Sewer	67	982-987	5-18-95
USS 4405	12	5	B	City of Alakanuk	20' Water & Sewer	67	994-999	5-18-95
USS 4405	13	5	B	City of Alakanuk	20' Water & Sewer	67	988-993	5-18-95
USS 4405	14	5	B	City of Alakanuk	20' Water & Sewer	68	1-6	5-18-95
USS 4405	1	6	B	City of Alakanuk	20' Water & Sewer	73	585-589	10-23-96
USS 4405	2	6	B	City of Alakanuk	15' & 20' Utility	73	590-594	10-23-96
USS 4405	3	6	B	City of Alakanuk	15' & 20' Utility	73	595-599	10-23-96
USS 4405	4	6	B	City of Alakanuk	20' Water & Sewer	73	600-604	10-23-96
USS 4405	5	6	B	City of Alakanuk	20' Water & Sewer	72	149-153	5-31-96
USS 4405	6	6	B	City of Alakanuk	20' Water & Sewer	72	149-153	5-31-96
USS 4405	9	6	B	City of Alakanuk	10' & 20' Utility	72	154-158	5-31-96
USS 4405	7	6	B	City of Alakanuk	20' Water & Sewer	72	159-163	5-31-96
USS 4405	10	6	B	City of Alakanuk	10' & 20' Utility	72	164-168	5-31-96
USS 4405	18	8	B	City of Alakanuk	10' Water & Sewer	68	14-18	5-18-95



- BUILDING KEY**
- 15. National Guard Armory
  - 16. Post Office
  - 17. Health Clinic
  - 18. Police Department
  - 19. City Rental
  - 20. Head Start School
  - 21. Alakanuk School
  - 22. Alakanuk School Garage
  - 23. Alakanuk Elementary School
  - 24. Alakanuk High School
  - 25. Teacher Housing
  - 26. Laundromat
  - 27. Alakanuk City Offices
  - 28. United Utilities, Inc. Phone Co.
  - 29. Airport Maintenance Facility
  - 30. Alakanuk Native Corp. Garage & Maintenance Facility
  - 31. Alakanuk Native Corp. Offices
  - 32. Alakanuk Native Store
  - 33. Alakanuk Native Corp. Generator Shed
  - 34. Alakanuk Native Store Bulk Fuel Tank Farm

### Community Map ALAKANUK

62° 41' 15" N 164° 40' 05" W (NAD 83)  
 Approximate Elevation: 8'  
 Township 30 North, Range 82 West, S.M., AK  
 U.S.G.S. Quadrangle "KWIGUK C-6", Alaska  
 BETHEL RECORDING DISTRICT

**LEGEND**

	Residential Building		Electric
	Commercial Building		Telephone
	Public Building		Electric & Telephone
	Vacant/Outlying Building		Underground Electric
	High Water Mark		Underground Elec. & Tele.
			Sewer Line
			Water Line
			Forced Main Sewer Line
			Edge of Water
			Floodline Elevation 12.16'

0 200 400  
SCALE IN FEET

SCALE: 1"=200'  
 Date of Photography: August 31, 2006  
 Magnetic Declination computed by U.S.G.S. Geomag  
 Program using AK-2000.COF model as of July 1, 2006.

SHEET  
2 of 3

**FLOOD DATA**  
 The U.S. Army Corps of Engineers (USACE) report "Alaska Communities Flood Hazard Data 1997", has published flood of record which occurred in 1952 with a flood elevation of 12.16 feet based upon this map's vertical control. The high water elevation sign was placed on the flood gauge with the water symbol, located on a the southerly corner of the Alakanuk Tribal and City Offices. The City of Alakanuk is all located below the 1952 floodline, except for portions of the airport and areas near the Tribal Hall.

ALAKANUK COMMUNITY MAP SHEET 2 1"=200' (2006 PHOTOGRAPHY)