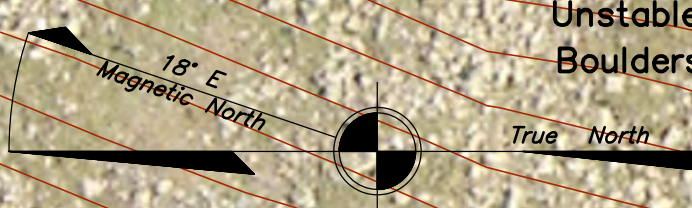
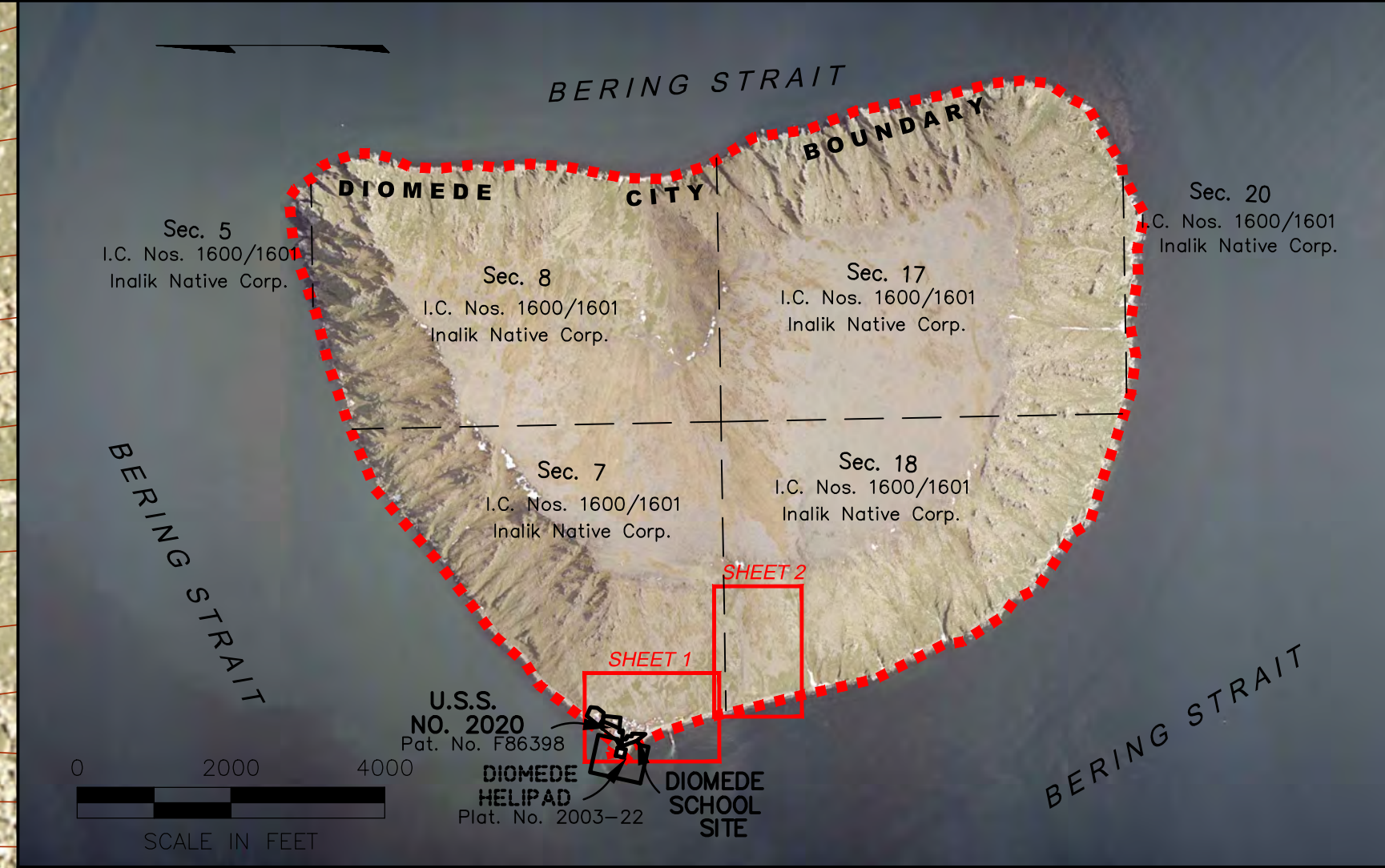
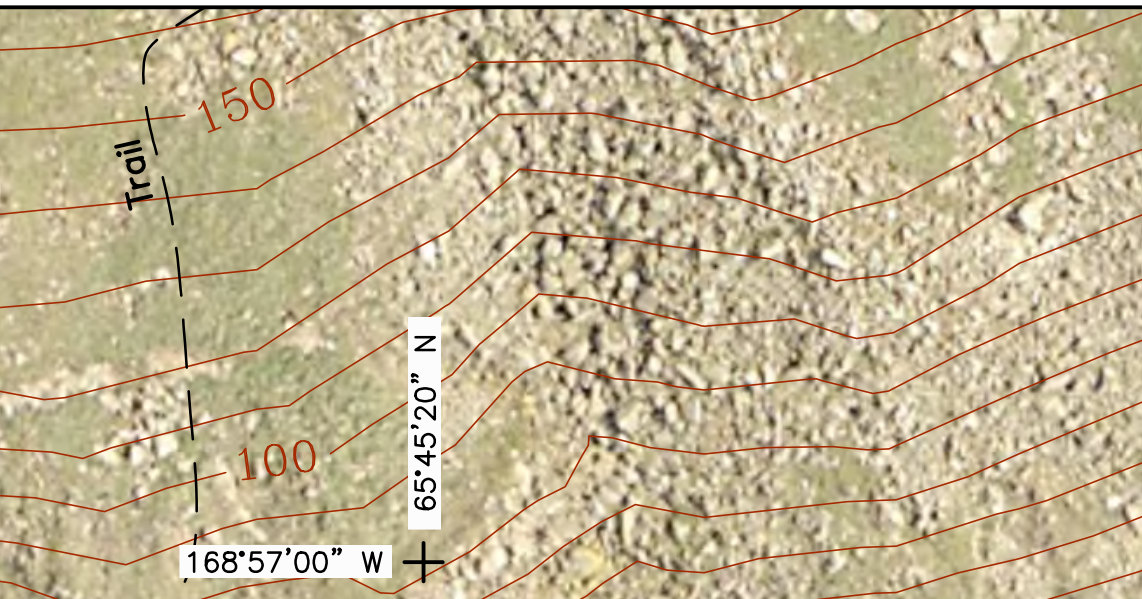


- BUILDING KEY**
1. High School
  2. Generator
  3. Elementary School
  4. IRA Building
  5. City Office
  6. Recreation Center
  7. National Guard Armory
  8. Water Tank
  9. Washeteria/Clinic
  10. Water Treatment Plant
  11. Native Store
  12. Church
  13. Native Corporation
  14. Water Tank
  15. New Helipad
  16. Abandoned Bulk Fuel Tanks
  17. AT&T Alascom Tower
  18. Fuel Tanks



Approximate Location Telephone Cable to Tower on top of Island

SCALE IN FEET 0 2000 4000



**MAP NOTES**  
 This map was prepared by Kawerak Inc. in cooperation with the Alaska Department of Commerce, Community and Economic Development (Commerce) using funding from Commerce, the Bureau of Indian Affairs, the Alaska Native Tribal Health Consortium, (Village of Diomedede) and funding from the Initiative for Accelerated Infrastructure Development (IAID). The IAID is supported by grants from the Denali Commission, USDA Rural Development, Alaska Department of Transportation and Public Facilities and Commerce. Preparation of this map was financed in part by the Mini-Grant Program with funds from the U.S. Forest Service. The Mini-Grant Program is administered by the Department of Commerce, Community, and Economic Development, Division of Community Advocacy. Kawerak Inc. contracted with Global Positioning Services, Inc. in May of 2004 to prepare the map.

This map should not be construed as a survey. On-site surveys should be conducted prior to engineering or construction.

This map was compiled to meet horizontal and vertical accuracy in accordance with national map accuracy standards.

Property and utility information has been generated from readily available sources with limited accuracy checks. Property information is not intended to represent a title search of the Records Office record. Utility location is approximate and shows only the main lines as the service lines have been omitted for clarity. Generally, the information is current as of December 2004.

The Alaska Native Tribal Health Consortium provided sanitation facility records.

This map is based on photography acquired on June 11, 2004, at a nominal scale of 1 in = 800 ft.

AeroMap U.S. prepared the orthophoto and topographic mapping. The orthophoto is an aerial photo which has been corrected, by rectification to ground control stations, to remove distortions and warpage due to ground topography and aircraft tilt and trim.

**HORIZONTAL AND VERTICAL CONTROL**  
 The control monument for the digital orthophoto was N.G.S. "Point 9 1944". Published horizontal datum NAD 1983 coordinates for this monument are North 69° 45'48.37684" and West 168°56'33.71357". The vertical datum was "ADDT TBM" for this monument is 33.00 feet above mean high water (MHW).

The Village of Diomedede has been adjusted to this control using high-precision GPS methods and the adjusted coordinates and elevation for Monument "USLM 2020", were calculated to establish a local control reference. The NAD 1983 coordinates for this monument are North 65°45'30.0217" and West 168°57'00.6420" and the NAD-83 elevation is 116.90 feet above mean high water (MHW).

The contours were prepared at two (2) foot contour intervals with index contours every ten (10) feet. Two foot contours have been omitted in steep areas, leaving the index contours for clarity.

**FLOOD DATA**  
 The U.S. Army Corps of Engineers (USACE) Reports "Alaska Communities Flood Hazard Data 2000" has published flood record which occurred in 1977 in which wind-driven waves caused a flooding depth of 15 to 20 ft.



**Community Map DIOMEDE**

65° 45' 30" N 168° 57' 00" W (NAD 83)  
 Approximate Elevation: 116'  
 Township 4 North, Range 49 West, K.R.M., AK  
 U.S.G.S. Quadrangle "Teller," Alaska  
 CAPE NOME RECORDING DISTRICT

**LEGEND**

	Residential Building		Electric & Telephone Line w/pole
	Commercial Building		Water Line
	Public Building		Fuel Line
	Periodic Flooding Areas		Sewer Line
			USLM 2020 BASIS OF COORDINATES

SCALE: 1"= 50'  
 Date of Photography: June 28, 2004 SCALE IN FEET  
 Magnetic Declination computed by U.S.G.S. Geomag SHEET  
 Program using AK-2000.COF model as of August 15, 2004 1 of 3

DIOMEDE COMMUNITY MAP SHEET 1 1"= 50' (2004 PHOTOGRAPHY)